



1 Gladstone Court, Ferryhill, DL17 0AN

Offers Over £300,000

Viewing is essential for this stunning four bedroom individually designed property on this exclusive private development with open countryside to the rear. This fantastic family home offers; a large entrance hall with downstairs WC, an attractive fitted kitchen / dining room with integrated appliances, utility, two reception rooms, contemporary bathroom suite and boasts an outstanding south facing garden to the rear with a pergola covering the premium rigid hot tub and a timber built bar/ leisure room. At the front is a block paved drive for multiple vehicles and an integral garage .This perfect family home must be viewed internally to be fully appreciated.

Ground Floor

Entrance Hall

A most spacious area which has composite entrance door, wood flooring, central heating radiator and spindle staircase leading to the first floor.

Cloakroom



Has white suite comprising; WC, hand wash basin, tiled walls and central heating radiator.

Lounge 14'7" x 11'9" (4.45 x 3.58)



Has feature fire surround, central heating radiator and French glass panel doors leading onto the sitting room.

Sitting Room 13'4" x 9'10" (4.06 x 3.00)



Has wood flooring, central heating radiator and UPVC French doors leading onto the patio area.

Kitchen / Dining Room 19'2" x 12'4" (5.84 x 3.76)



Has a stunning range of fitted wall and base units, laminate work surfaces, breakfast bar, stainless steel inset sink unit with mixer tap, built under electric oven and hob with stainless steel extractor hood, integrated dishwasher, part tiled walls, central heating radiator and wood flooring to the dining area.

Utility 9'10" x 5'10" (3.00 x 1.78)



Has a range of fitted base units, laminate work surfaces, plumbing for automatic washing machine and tumble dryer, storage cupboard, wood flooring, central heating radiator and access to the garage.

First Floor Landing

Bedroom 1 19'0" x 9'10" (5.79 x 3.00)



Has laminate flooring and central heating radiator.

Bedroom 2 13'4" x 9'4" (4.06 x 2.84)



Has central heating radiator.

Bedroom 3 11'9" x 9'3" (3.58 x 2.82)



Has laminate flooring and central heating radiator.

Bedroom 4 8'3" x 7'2" (2.51 x 2.18)



Has laminate flooring and central heating radiator.

Bathroom WC



Has white suite comprising; paneled shower bath with mains shower and glass screen, wash basin in vanity unit, WC, heated towel rail, tiled floor and split face tiled walls.

Exterior



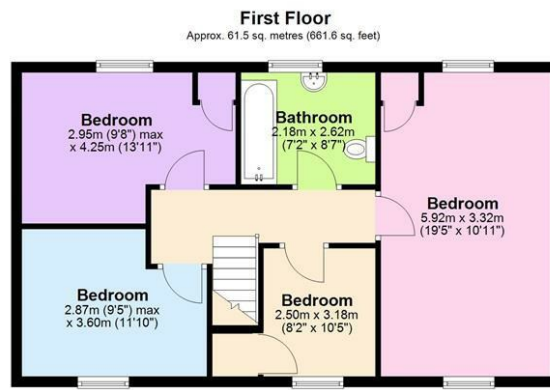
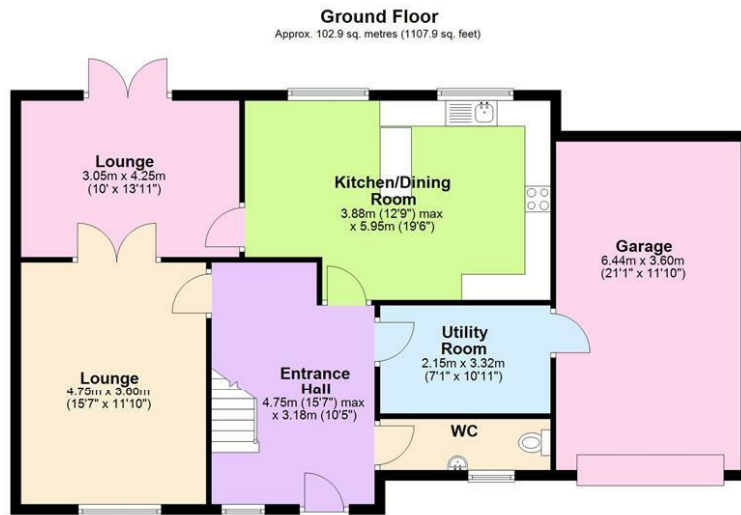
Has lawned front garden with block paved driveway for off road parking leading to the garage with electric powered door and wall mounted combination gas boiler. To the rear of the property is a large enclosed south facing garden area on two levels with lawn and decorative patio with a fixed pergola covering the rigid hot tub and a timber built bar / leisure room. On the upper level are vegetable plots and a greenhouse.

Disclaimer

N.B. WE HAVE NOT TESTED ANY APPLIANCES OR SYSTEMS AT THE PROPERTY. IF IN DOUBT, PURCHASERS SHOULD SEEK PROFESSIONAL ADVICE. THE MEASUREMENTS PROVIDED WITHIN THE DETAILS ARE FOR GUIDANCE PURPOSES ONLY. IF MORE ACCURATE MEASUREMENTS ARE NEEDED, THEN THE PURCHASERS SHOULD TAKE SUCH MEASUREMENTS THEMSELVES. THESE DETAILS INCLUDING PHOTOGRAPHY WERE PREPARED BY PETER CLARK PROPERTY SERVICES IN ACCORDANCE WITH THE SELLERS INSTRUCTIONS. THE ACCURACY OF

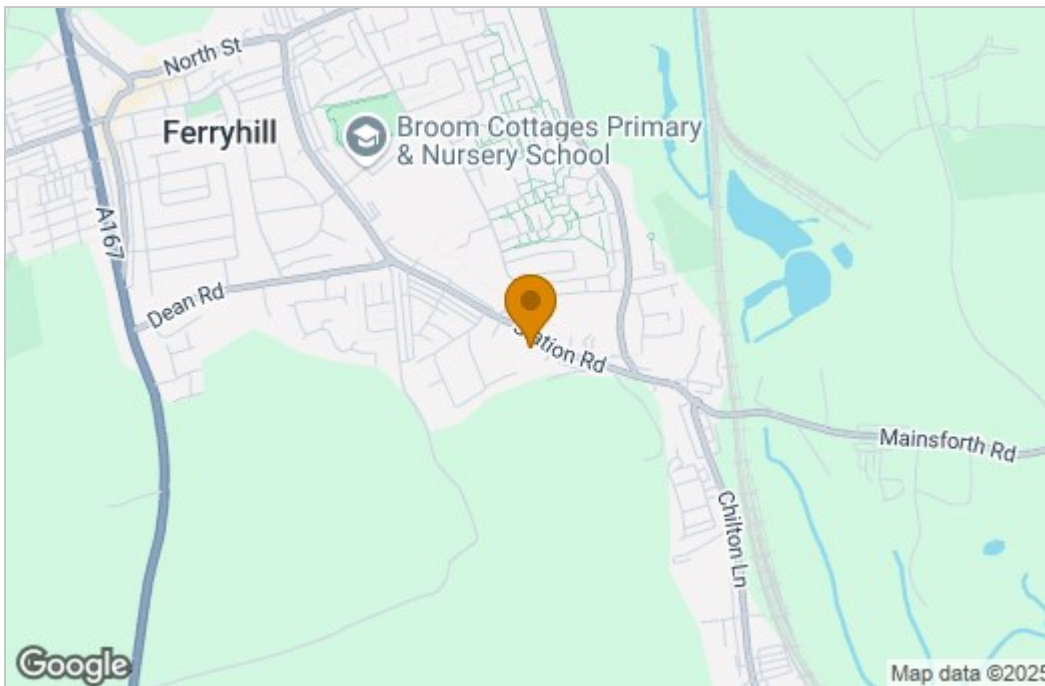
THESE PARTICULARS CANNOT BE GUARANTEED AND ANY PURCHASERS SHOULD SATISFY THEMSELVES BY INSPECTING OR OTHERWISE TO THE CORRECTNESS OF STATEMENTS CONTAINED IN THESE PARTICULARS. THESE PARTICULARS DO NOT CONSTITUTE ANY PART OF AN OFFER OR CONTRACT.

Floor Plan

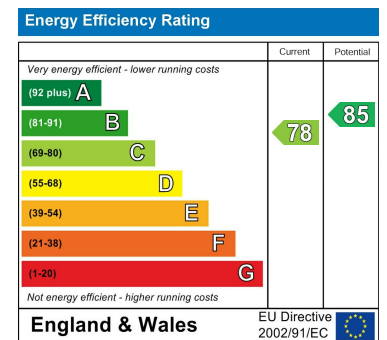


Total area: approx. 164.4 sq. metres (1769.5 sq. feet)
1 Gladstone Court, Ferryhill

Area Map



Energy Efficiency Graph



These particulars, whilst believed to be accurate are set out as a general outline only for guidance and do not constitute any part of an offer or contract. Intending purchasers should not rely on them as statements of representation of fact, but must satisfy themselves by inspection or otherwise as to their accuracy. No person in this firm's employment has the authority to make or give any representation or warranty in respect of the property.