



16 Cuthbert Road, Ferryhill, DL17 9LY

£89,950

Viewing is well recommended for this much improved three bedroomed semi detached house which benefits from gas central heating is double glazed and occupies a particularly pleasant location close to local amenities. the property comprises an entrance hall, lounge/dinning room, fitted kitchen with built in cooking appliances, sliding door wardrobes to master bedroom and modern white bathroom suite. outside are lawned gardens to front and rear.

Ground Floor

Entrance Hall

Has composite entrance door, laminate flooring, storage cupboard and stairs leading to the first floor.

Lounge 19'8" x 10'9" (5.99 x 3.28)



Has laminate flooring, central heating radiator, coved ceiling and UPVC patio doors leading out onto rear garden.

Kitchen 7'7" x 10'3" (2.31 x 3.12)

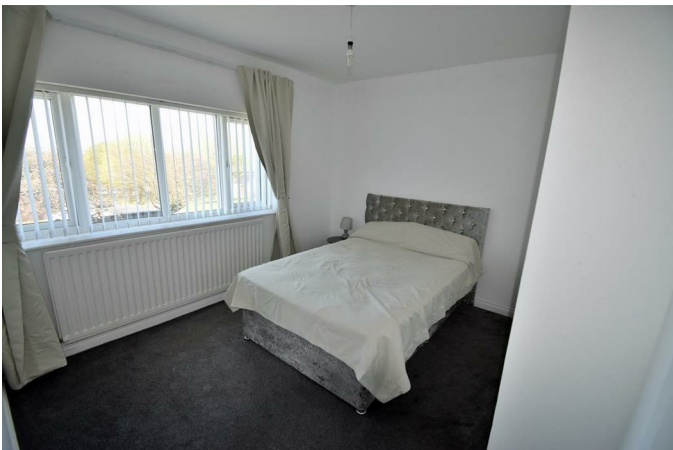


Has range of fitted wall and base units, laminate work surfaces, stainless steel inset sink unit with mixer tap, built under electric oven with gas hob, stainless steel extractor canopy, tiled splash backs, ceiling spotlights, tiled floor, combination gas boiler and composite entrance door.

First Floor Landing

Has loft access.

Bedroom 1 11'0" x 10'0" (3.35 x 3.05)



Has sliding wardrobes and central heating radiator.

Bedroom 2 9'0" x 9'9" (2.74 x 2.97)



Has storage cupboard and central heating radiator.

Bedroom 3 7'4" x 6'11" (2.24 x 2.11)



Has central heating radiator.

Bathroom



Has white suite comprising: panel bath with electric shower, wash basin in vanity unit, WC, central heating radiator, part tiled walls, tiled floor and ceiling spotlights.

Exterior



Has lawned garden to both front and rear and brick built storage shed

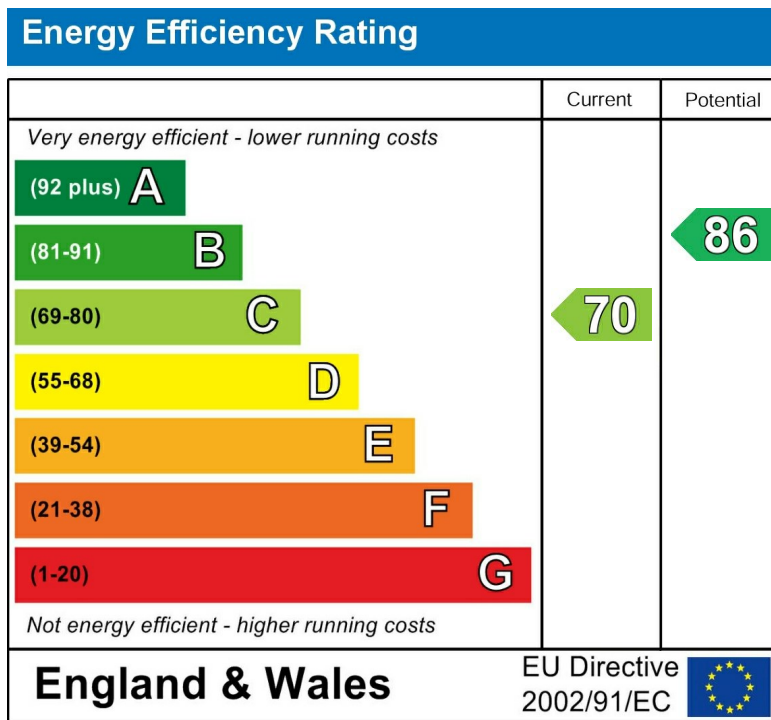
Disclaimer

N.B. WE HAVE NOT TESTED ANY APPLIANCES OR SYSTEMS AT THE PROPERTY. IF IN DOUBT, PURCHASERS SHOULD SEEK PROFESSIONAL ADVICE. THE MEASUREMENTS PROVIDED WITHIN THE DETAILS ARE FOR GUIDANCE PURPOSES ONLY. IF MORE ACCURATE MEASUREMENTS ARE NEEDED, THEN THE PURCHASERS SHOULD TAKE SUCH MEASUREMENTS THEMSELVES. THESE DETAILS INCLUDING PHOTOGRAPHY WERE PREPARED BY PETER CLARK PROPERTY SERVICES IN ACCORDANCE WITH THE SELLERS INSTRUCTIONS. THE ACCURACY OF THESE PARTICULARS CANNOT BE GUARANTEED AND ANY PURCHASERS SHOULD SATISFY THEMSELVES BY INSPECTING OR OTHERWISE TO THE CORRECTNESS OF STATEMENTS CONTAINED IN THESE PARTICULARS. THESE PARTICULARS DO NOT CONSTITUTE ANY PART OF AN OFFER OR CONTRACT.

Area Map



Energy Efficiency Graph



These particulars, whilst believed to be accurate are set out as a general outline only for guidance and do not constitute any part of an offer or contract. Intending purchasers should not rely on them as statements of representation of fact, but must satisfy themselves by inspection or otherwise as to their accuracy. No person in this firm's employment has the authority to make or give any representation or warranty in respect of the property.