



12 Oswald Close

, West Cornforth, DL17 9LX

£84,950



Viewing is well recommended for this comfortable two bedroom home which is maintained in good order and occupies a particularly sought after location, benefiting from gas central heating, double glazing, a pleasant lounge/dining room with feature fireplace, attractive fitted kitchen, master bedroom with built in wardrobes and a modern shower room/WC, outside are well kept gardens to the front and rear.



Ground Floor

Entrance Hall

Has composite entrance door with staircase leading to the first floor.

Lounge/Dining room 19'10 x 10'7 (6.05m x 3.23m)

Has feature fireplace with living flame electric fire, coved ceiling and central heating radiator.

Kitchen 9'1 x 7'7 (2.77m x 2.31m)

Has a range of fitted wall and base units, laminate work surfaces, inset composite sink unit with mixer tap, plumbing for automatic washing machine, stainless steel extractor canopy, tiled splash backs, laminate flooring, central heating radiator and composite entrance door leading out onto rear garden.

First Floor Landing

Bedroom 1 15'1 x 9'5 (4.60m x 2.87m)

Has central heating radiator, built in wardrobe and storage cupboard housing combination gas boiler.

Bedroom 2 10'7 x 10'1 (3.23m x 3.07m)

Has coved ceiling and central heating radiator.

Shower Room/ WC 9'2 x 7'6 (2.79m x 2.29m)

Has white suite comprising: fitted vanity unit with hand wash basin, WC, shower cubicle with glass shower screen, tiled floor, walls covered with UPVC cladding, central heating towel radiator.

Exterior

Has front garden laid to lawn and enclosed rear garden with block paved pathway and patio, borders with mature plants, trees and shrubs and brick outbuildings for further storage.

Disclaimer

N.B. WE HAVE NOT TESTED ANY APPLIANCES OR SYSTEMS AT THE PROPERTY. IF IN DOUBT, PURCHASERS SHOULD SEEK PROFESSIONAL ADVICE. THE MEASUREMENTS PROVIDED WITHIN THE DETAILS ARE FOR GUIDANCE PURPOSES ONLY. IF MORE ACCURATE MEASUREMENTS ARE NEEDED, THEN THE PURCHASERS SHOULD TAKE SUCH MEASUREMENTS THEMSELVES. THESE DETAILS INCLUDING PHOTOGRAPHY WERE PREPARED BY PETER CLARK PROPERTY SERVICES IN ACCORDANCE WITH THE SELLERS INSTRUCTIONS. THE ACCURACY OF THESE PARTICULARS CANNOT BE GUARANTEED AND ANY PURCHASERS SHOULD SATISFY THEMSELVES BY INSPECTING OR OTHERWISE TO THE CORRECTNESS OF STATEMENTS CONTAINED IN THESE PARTICULARS. THESE PARTICULARS DO NOT CONSTITUTE ANY PART OF AN OFFER OR CONTRACT.

These particulars, whilst believed to be accurate are set out as a general outline only for guidance and do not constitute any part of an offer or contract. Intending purchasers should not rely on them as statements of representation of fact, but must satisfy themselves by inspection or otherwise as to their accuracy. No person in this firm's employment has the authority to make or give any representation or warranty in respect of the property.

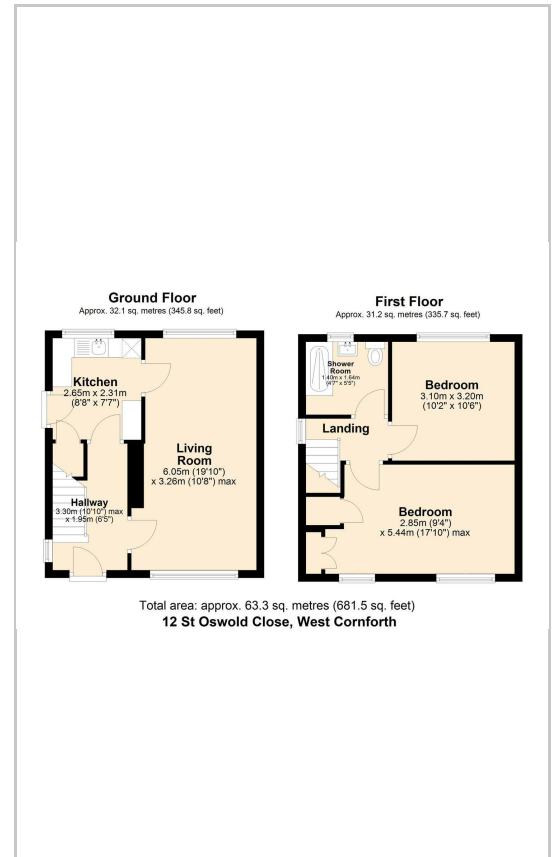
1 Parker Terrace, Ferryhill, County Durham, DL17 8JY

Tel: 01740 657777 Email: donna@peterclarkpropertyservices.co.uk <https://www.peterclarkpropertyservices.co.uk>

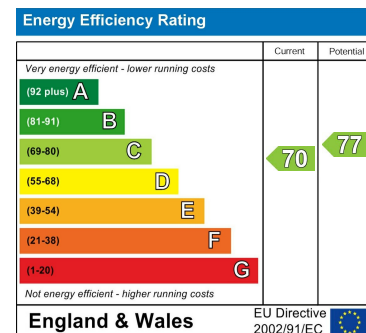
Area Map



Floor Plans



Energy Efficiency Graph



1 Parker Terrace, Ferryhill, County Durham, DL17 8JY

Tel: 01740 657777 Email: donna@peterclarkpropertyservices.co.uk <https://www.peterclarkpropertyservices.co.uk>