



21 Westfield Terrace, Bishop Middleham, DL17 9BH

£219,950

We are pleased to offer to the market this stunning family home in this most sought after village of Bishop Middleham. The property has been very well maintained by the present owners and benefits from; gas central heating, double glazing, recently refurbished modern attractive fitted kitchen with integrated appliances, shower room, sun room overlooking the garden, four good size bedrooms, garage and gardens. With open views to the rear this property is not to be missed.

Ground Floor

Entrance Porch

Has UPVC entrance door.

Hallway

Has central heating radiator and staircase leading to the first floor.

Lounge 15'1 x 12'1 (4.60m x 3.68m)



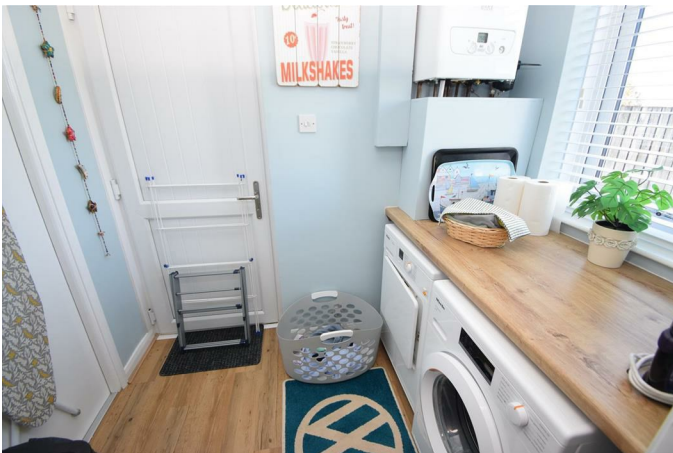
Has coved ceiling, central heating radiator, stone built fireplace with multi-fuel burner and wood flooring.

Kitchen 7'4 x 11'9 (2.24m x 3.58m)



Has a range of fitted wall and base units, laminate work surfaces, Belfast sink unit with mixer tap, built in double electric oven with ceramic hob, integrated dishwasher, fridge freezer and microwave, tiled splashbacks and laminate flooring.

Utility Room 5'0 x 7'8 (1.52m x 2.34m)



Has plumbing for automatic washing machine and

tumble dryer, laminate work surfaces, wall mounted combination gas boiler, laminate flooring and UPVC entrance door leading to the garage.

Dining Room / Sun Room 20'8 x 11'4 (6.30m x 3.45m)



Has ceiling spotlights, laminate flooring, UPVC french doors leading outside, coved ceiling and central heating radiator.

Bedroom 1 13'10 x 11'3 (4.22m x 3.43m)



Has central heating radiator and fitted storage cupboards.

Bedroom 2 8'10 x 12'1 (2.69m x 3.68m)



Has central heating radiator.

Bedroom 3 8'2 x 8'5 (2.49m x 2.57m)



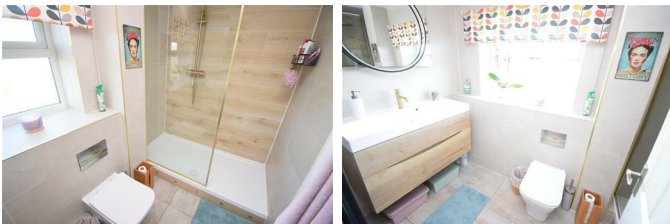
Has central heating radiator.

Bedroom 4 8'6 x 8'11 (maximum measurements) (2.59m x 2.72m (maximum measurements))



Has central heating radiator.

Shower Room



Has white suite comprising: double shower cubicle with mixer shower and glass shower screen, WC and vanity unit with hand wash basin, tiled walls and tiled floor and central heating radiator.

Exterior



Has garage with remote control garage door, power and lighting and garden laid to lawn with patio area and shed with power.

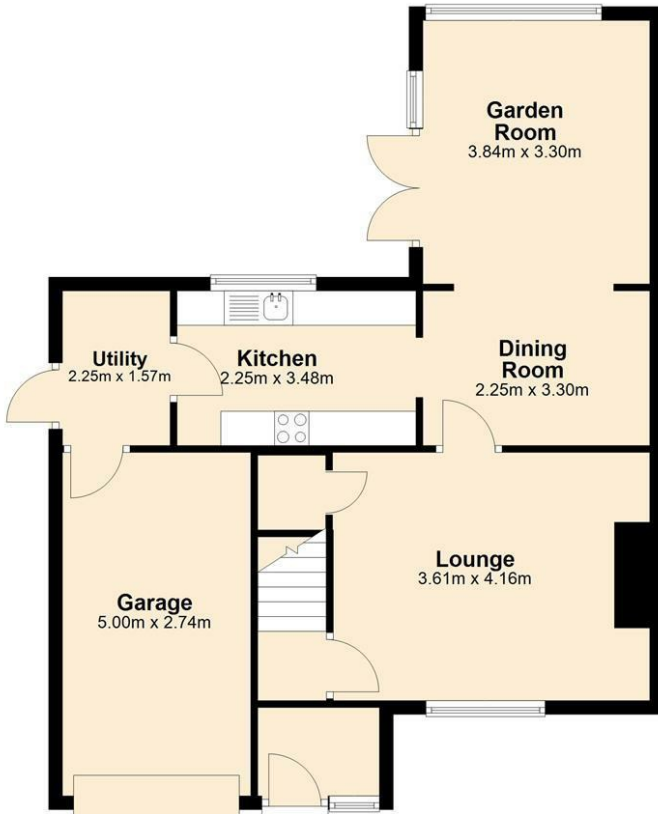
Disclaimer

N.B. WE HAVE NOT TESTED ANY APPLIANCES OR SYSTEMS AT THE PROPERTY. IF IN DOUBT, PURCHASERS SHOULD SEEK PROFESSIONAL ADVICE. THE MEASUREMENTS PROVIDED WITHIN THE DETAILS ARE FOR GUIDANCE PURPOSES ONLY. IF MORE ACCURATE MEASUREMENTS ARE NEEDED, THEN THE PURCHASERS SHOULD TAKE SUCH MEASUREMENTS THEMSELVES. THESE DETAILS INCLUDING PHOTOGRAPHY WERE PREPARED BY PETER CLARK PROPERTY SERVICES IN ACCORDANCE WITH THE SELLERS INSTRUCTIONS. THE ACCURACY OF THESE PARTICULARS CANNOT BE GUARANTEED AND ANY PURCHASERS SHOULD SATISFY THEMSELVES BY INSPECTING OR OTHERWISE TO THE CORRECTNESS OF STATEMENTS CONTAINED IN THESE PARTICULARS. THESE PARTICULARS DO NOT CONSTITUTE ANY PART OF AN OFFER OR CONTRACT.

Floor Plan

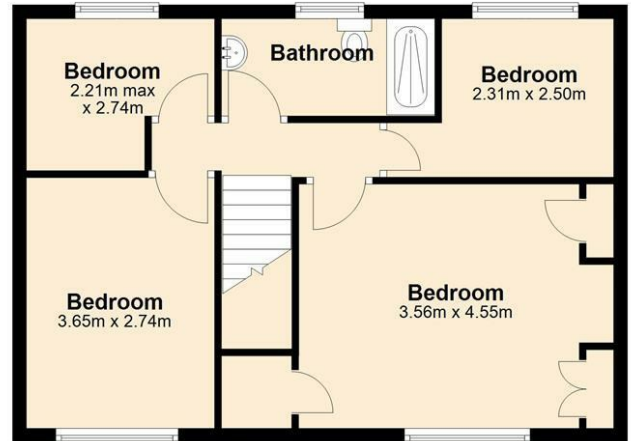
Ground Floor

Approx. 68.7 sq. metres



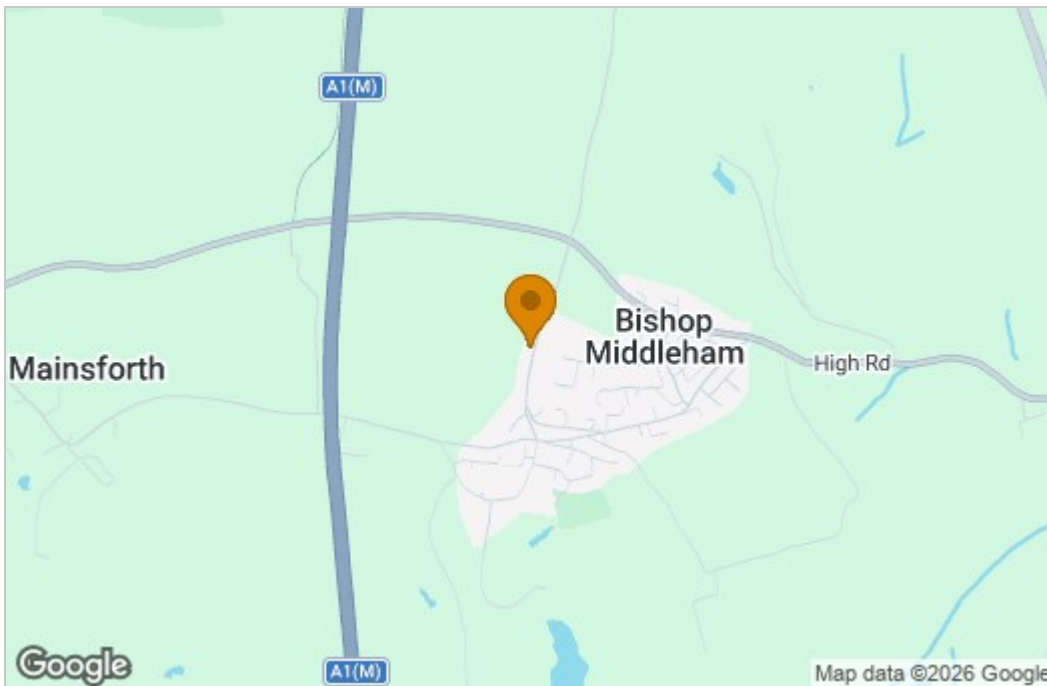
First Floor

Approx. 50.8 sq. metres

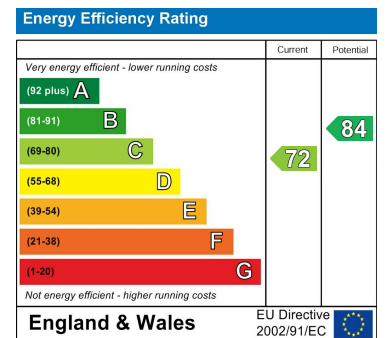


Total area: approx. 119.5 sq. metres
21 Westfield Terrace, Bishop Middleham

Area Map



Energy Efficiency Graph



These particulars, whilst believed to be accurate are set out as a general outline only for guidance and do not constitute any part of an offer or contract. Intending purchasers should not rely on them as statements of representation of fact, but must satisfy themselves by inspection or otherwise as to their accuracy. No person in this firm's employment has the authority to make or give any representation or warranty in respect of the property.